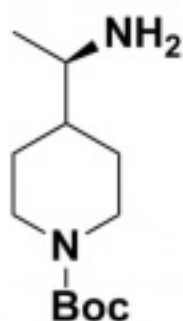
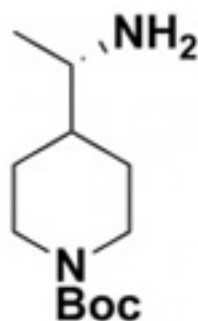


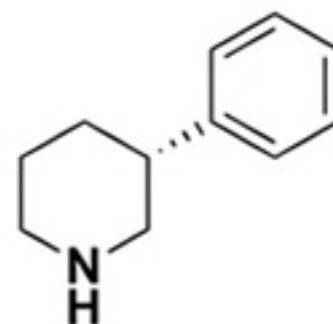
## December Theme - DIVERSITY



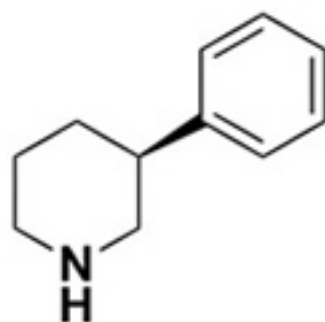
**A0751**



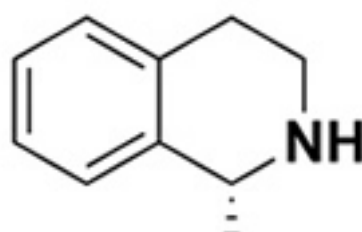
**A0752**



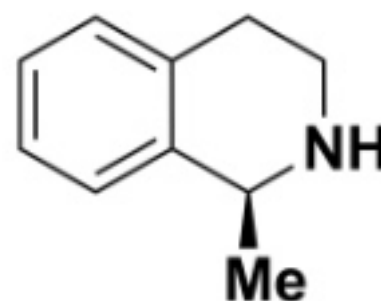
**A0703**



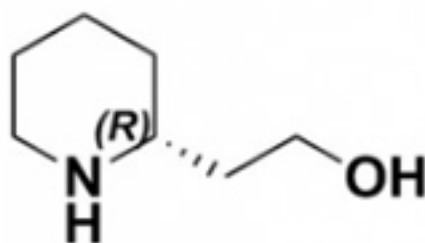
**A0702**



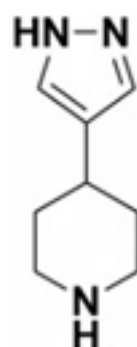
**E0008R**



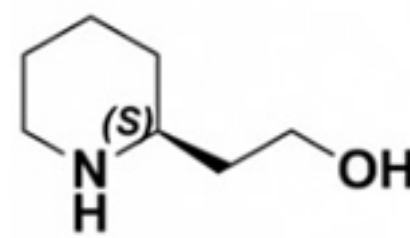
**E0008S**



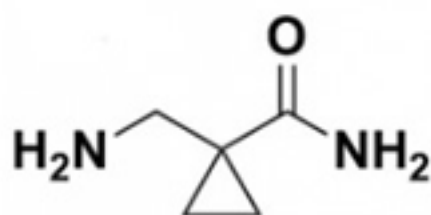
**A0606**



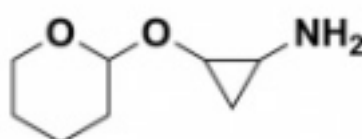
**A0785**



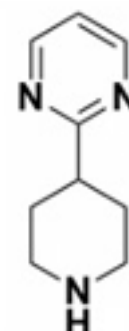
**A0605**



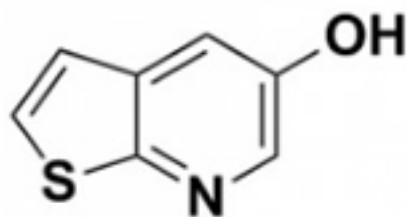
**A0784**



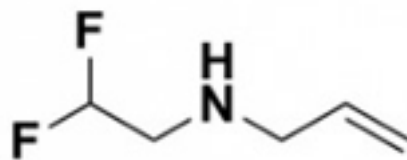
**A0875**



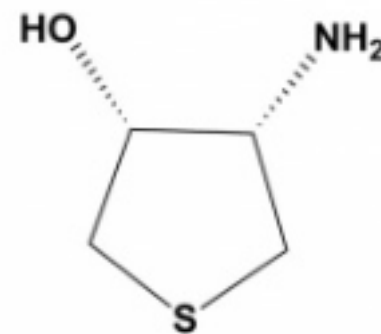
**A0600**



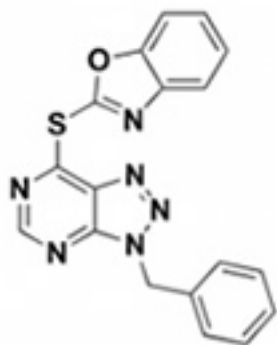
**A0440**



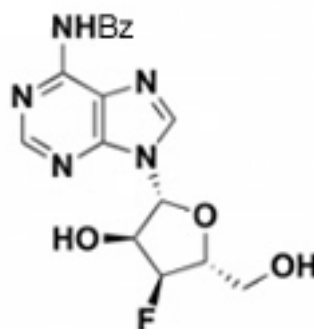
**A0542**



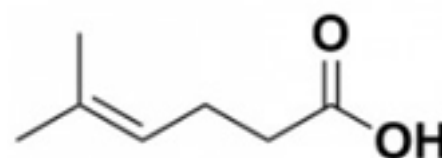
**A1216**



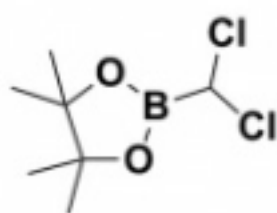
**A0734/VAS2870**



**A0756**



**A0734**



**A0834**

---

LCC has come a long way since the start of operations in 2015. At the beginning, our product range was limited to piperidine building blocks. 2 years later, we now have a broad range of synthetic technologies that allow us to produce a wide range of heterocycles, building blocks and API on mg-kg scale.

If you would like further information to explore our complete range of products and services that may impact on your 2017 projects, please don't hesitate to get in touch with me.

May I take this opportunity to wish you all the best for the upcoming holiday period.

Regards,

Dr Paul Colbon

CEO & Co-Founder

Office: +44(0)151 794 2936 | Mobile: +44(0)7415946636

Email: [paul.colbon@liverpoolchirochem.co.uk](mailto:paul.colbon@liverpoolchirochem.co.uk)



BUILDING BLOCKS



SCREENING LIBRARIES



CHEMISTRY SERVICES



MOLFINDER

